

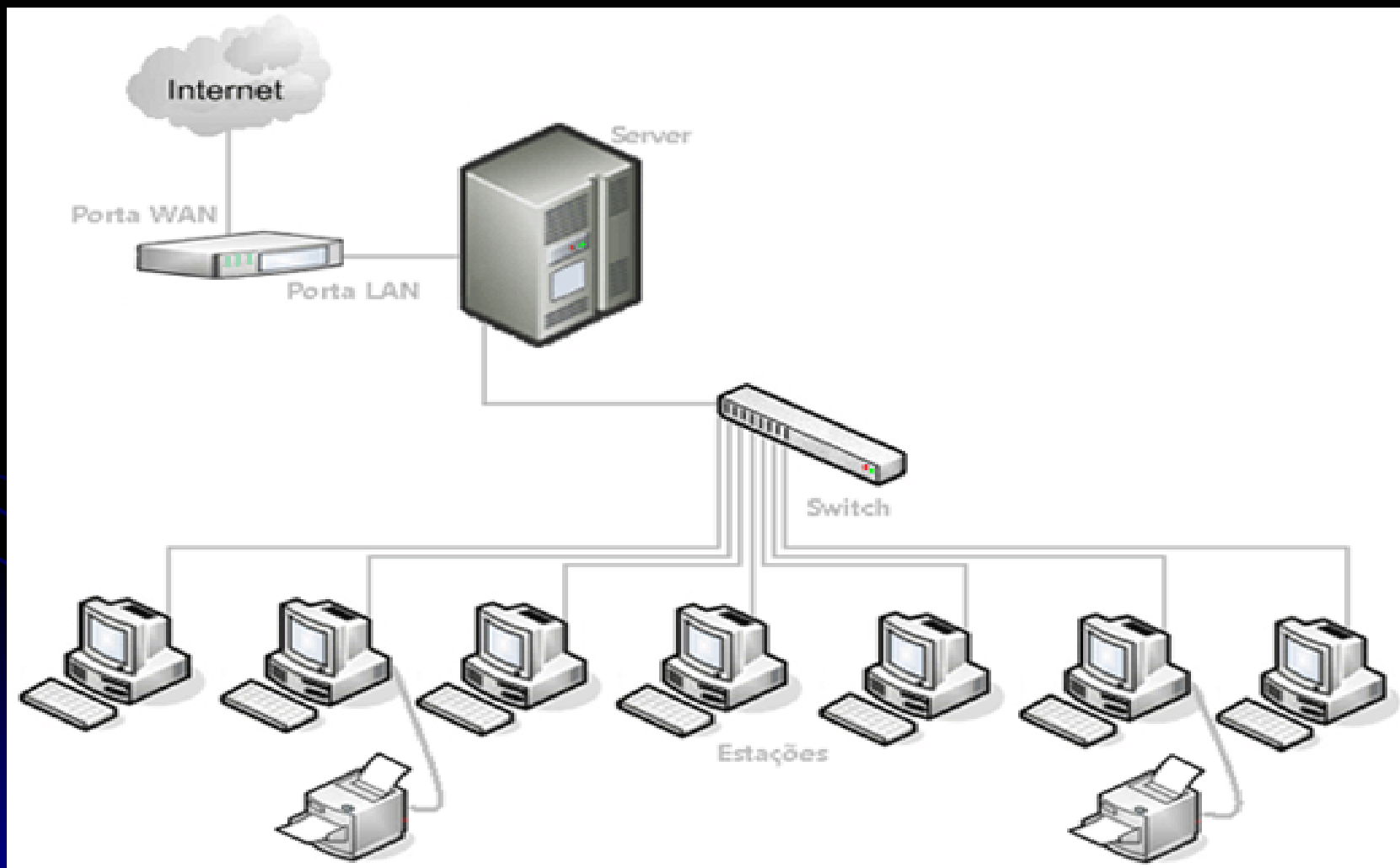
SNMP

Fábrica de Software



Redes

Conceito de Redes



Software Libre

Nagios®

General

- Home
- Documentation

Monitoring

- Tactical Overview
- Service Detail
- Host Detail
- Status Overview
- Status Summary
- Status Grid
- Status Map
- 3-D Status Map

- Service Problems
- Host Problems
- Network Outages

- Comments
- Downtime

- Process Info
- Performance Info
- Scheduling Queue

Reporting

- Trends
- Availability
- Alert Histogram
- Alert History
- Alert Summary
- Notifications
- Event Log

Configuration

- View Config

Nagios®

Copyright (c) 1999-2002 Ethan Galstad

Version 1.0

November 24, 2002

New Installations:

If you have just installed Nagios®, read the [documentation](#) for instructions on getting everything up and running.

Click [here](#) for a brief overview of new features that have been added in this release.

For More Information:

Visit the Nagios homepage at <http://www.nagios.org> for information on bug fixes, upgrades, support, etc.



Nagios and the Nagios logo are registered trademarks of Ethan Galstad.

Nagios is provided AS IS with NO WARRANTY OF ANY KIND, INCLUDING THE WARRANTY OF DESIGN, MERCHANTABILITY, AND FITNESS FOR A PARTICULAR PURPOSE.

Status e Comando de alertas

Nagios®

General

- Home
- Documentation

Monitoring

- Tactical Overview
- Service Detail
- Host Detail
- Status Overview
- Status Summary
- Status Grid
- Status Map
- 3-D Status Map

- Service Problems
- Host Problems
- Network Outages

- Comments
- Downtime

- Process Info
- Performance Info
- Scheduling Queue

Reporting

- Trends
- Availability
- Alert Histogram
- Alert History
- Alert Summary
- Notifications
- Event Log

Configuration

- View Config

Host Information

Last Updated: Mon May 31 14:18:54 BRT 2010
Updated every 60 seconds
Nagios® - www.nagios.org
Logged in as: *ricardo*

- [View Status Detail For This Host](#)
- [View Alert History For This Host](#)
- [View Trends For This Host](#)
- [View Alert Histogram For This Host](#)
- [View Availability Report For This Host](#)
- [View Notifications This Host](#)

Host
ALUSA-VOIP-GW-ESCRITORIO
(alusa-voip_gateway)

187.108.35.50

Host State Information



Host Status:	UP
Status Information:	(Host assumed to be up)
Last Status Check:	30-05-2010 15:06:46
Status Data Age:	0d 23h 12m 8s
Last State Change:	23-05-2010 18:54:21
Current State Duration:	7d 19h 24m 33s
Last Host Notification:	N/A
Current Notification Number:	0
Is This Host Flapping?	NO
Percent State Change:	0.00%
In Scheduled Downtime?	NO
Last Update:	31-05-2010 14:18:48

Host Checks:	ENABLED
Host Notifications:	ENABLED
Event Handler:	ENABLED
Flap Detection:	ENABLED

Host Commands

- ☒ [Disable checks of this host](#)
- ☒ [Disable notifications for this host](#)
- ☒ [Schedule downtime for this host](#)
- ☒ [Disable notifications for all services on this host](#)
- ☒ [Enable notifications for all services on this host](#)
- ☒ [Schedule an immediate check of all services on this host](#)
- ☒ [Disable checks of all services on this host](#)
- ☒ [Enable checks of all services on this host](#)
- ☒ [Disable event handler for this host](#)
- ☒ [Disable flap detection for this host](#)

Host Comments

-  [Add a new comment](#)
-  [Delete all comments](#)

Entry Time	Author	Comment	Comment ID	Persistent	Actions
This host has no comments associated with it.					

[View History For All Hosts](#)
[View Notifications For All Hosts](#)
[View Host Status Detail For All Hosts](#)

Alertas de aplicativos

Service Status Details For All Hosts

Host	Service	Status	Last Check	Duration	Attempt	Status Information
58-ispq-silo	PING	OK	31-05-2010 14:33:26	0d 1h 22m 0s	1/3	PING OK - Packet loss = 0%, RTA = 32.50 ms
alisa-voip_gateway	PING	OK	31-05-2010 14:34:18	7d 19h 41m 4s	1/5	PING OK - Packet loss = 20%, RTA = 76.20 ms
argonmail	Apache	OK	31-05-2010 14:33:02	13d 12h 40m 13s	1/5	HTTP ok: HTTP/1.1 200 OK - 0.090 second response time
	IMAP	OK	31-05-2010 14:33:50	31d 20h 1m 0s	1/5	IMAP OK - 0.003 second response time on port 143 [* OK [CAPABILITY IMAP4rev1 UIDPLUS CHILDREN NAMESPACE THREAD=ORDEREDSUBJECT THREAD=REFERENCES SORT QUOTA IDLE ACL ACL2=UNION Courier-IMAP ready. Copyright 1998-2005 Double Precision, Inc. See COPYING for distribution information.]
	POP3	OK	31-05-2010 14:33:26	0d 12h 2m 42s	1/3	POP OK - 0.026 second response time on port 110 [+OK <31482.1275331642@argon.com.br>]
	SMTP	OK	31-05-2010 14:33:26	13d 12h 26m 13s	1/5	SMTP OK - 0 second response time
	SSH	OK	31-05-2010 14:34:59	0d 9h 5m 32s	1/5	SSH OK - OpenSSH_3.9p1 (protocol 2.0)
argonweb	DNS	OK	31-05-2010 14:35:02	0d 11h 37m 22s	1/3	DNS ok - 1 seconds response time, Address(es) is/are (null)
	DNS-AXFR	OK	31-05-2010 14:33:26	0d 11h 37m 12s	1/5	TCP OK - 0.022 second response time on port 53
	FTP	OK	31-05-2010 14:33:47	22d 10h 56m 47s	1/3	FTP OK - 0.018 second response time on port 21 [220 Microsoft FTP Service]
	IS	OK	31-05-2010 14:33:29	31d 20h 24m 47s	1/3	TCP OK - 0.014 second response time on port 80
	MySQL	OK	31-05-2010 14:33:45	31d 21h 0m 26s	1/3	TCP OK - 0.028 second response time on port 3306
asteriskbrasil	Apache	OK	31-05-2010 14:35:02	0d 1h 27m 2s	1/3	HTTP ok: HTTP/1.1 200 OK - 0.597 second response time
bacamarte	PING	OK	31-05-2010 14:34:35	5d 4h 7m 25s	1/3	PING OK - Packet loss = 0%, RTA = 66.90 ms
	SSH	OK	31-05-2010 14:33:20	2d 22h 59m 32s	1/5	TCP OK - 0.161 second response time on port 22
base-cler	PING	OK	31-05-2010 14:30:12	1d 19h 29m 23s	1/5	PING OK - Packet loss = 0%, RTA = 23.80 ms
base-danilolabs	PING	OK	31-05-2010 14:33:31	0d 1h 22m 0s	1/5	PING OK - Packet loss = 0%, RTA = 22.80 ms
base-kennedy	PING	OK	31-05-2010 14:34:25	0d 0h 2m 42s	1/5	PING OK - Packet loss = 0%, RTA = 64.00 ms
base-riovovo	PING	OK	31-05-2010 14:33:39	0d 0h 47m 52s	1/3	PING OK - Packet loss = 0%, RTA = 14.70 ms
base-tsunami	PING	OK	31-05-2010 14:34:36	4d 4h 58m 55s	1/5	PING OK - Packet loss = 0%, RTA = 14.30 ms
base-usl	PING	OK	31-05-2010 14:33:31	0d 0h 47m 52s	1/3	PING OK - Packet loss = 0%, RTA = 12.70 ms
base2-distrito-scrp	PING	OK	31-05-2010 14:34:34	1d 11h 59m 6s	1/5	PING OK - Packet loss = 0%, RTA = 17.00 ms

Mapeamento da Rede

Nagios

General

- Home
- Documentation

Monitoring

- Tactical Overview
- Service Detail
- Host Detail
- Status Overview
- Status Summary
- Status Grid
- Status Map
- 3-D Status Map

- Service Problems
- Host Problems
- Network Outages

- Comments
- Downtime

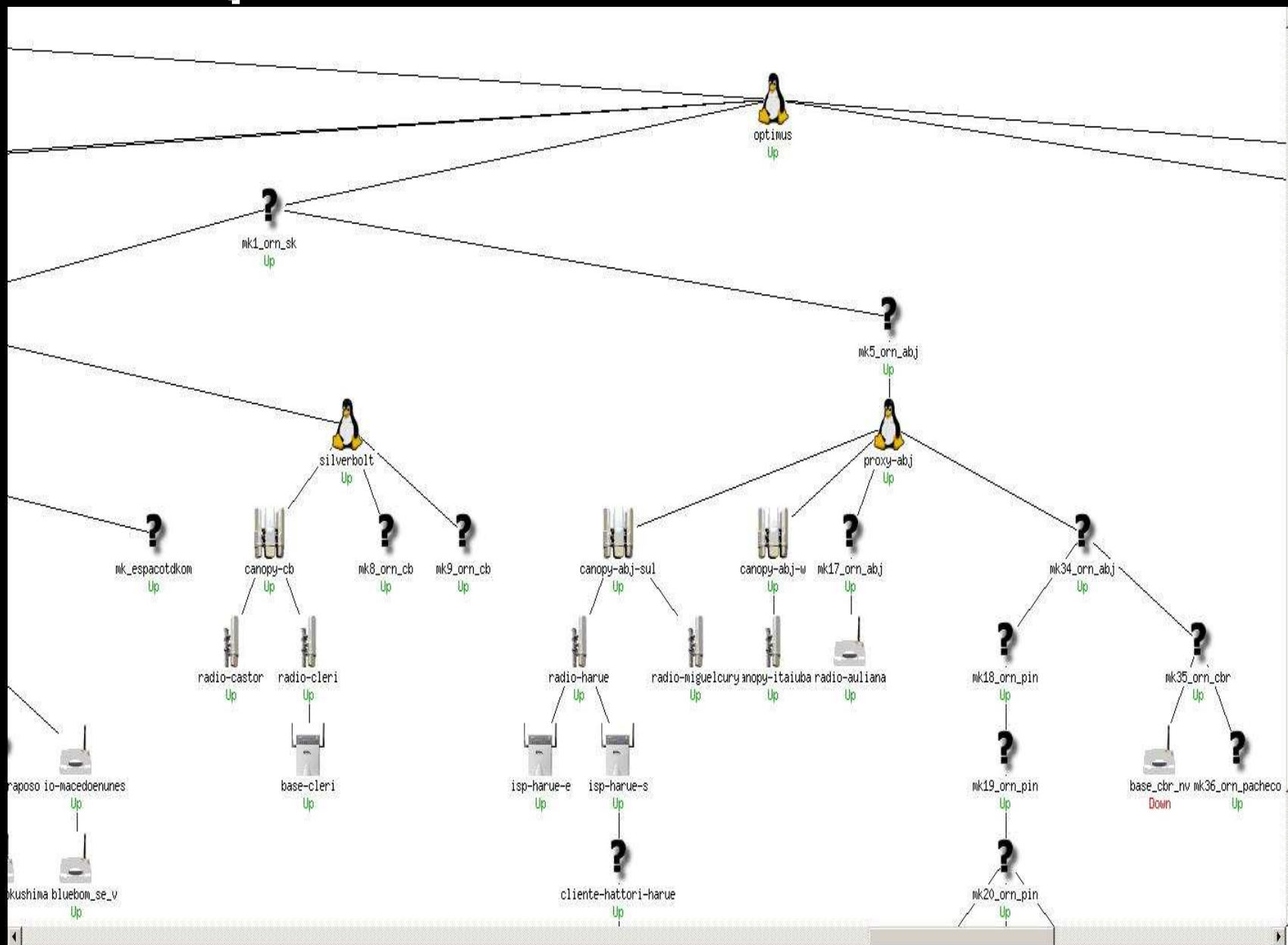
- Process Info
- Performance Info
- Scheduling Queue

Reporting

- Trends
- Availability
- Alert Histogram
- Alert History
- Alert Summary
- Notifications
- Event Log

Configuration

- View Config



TcpDump

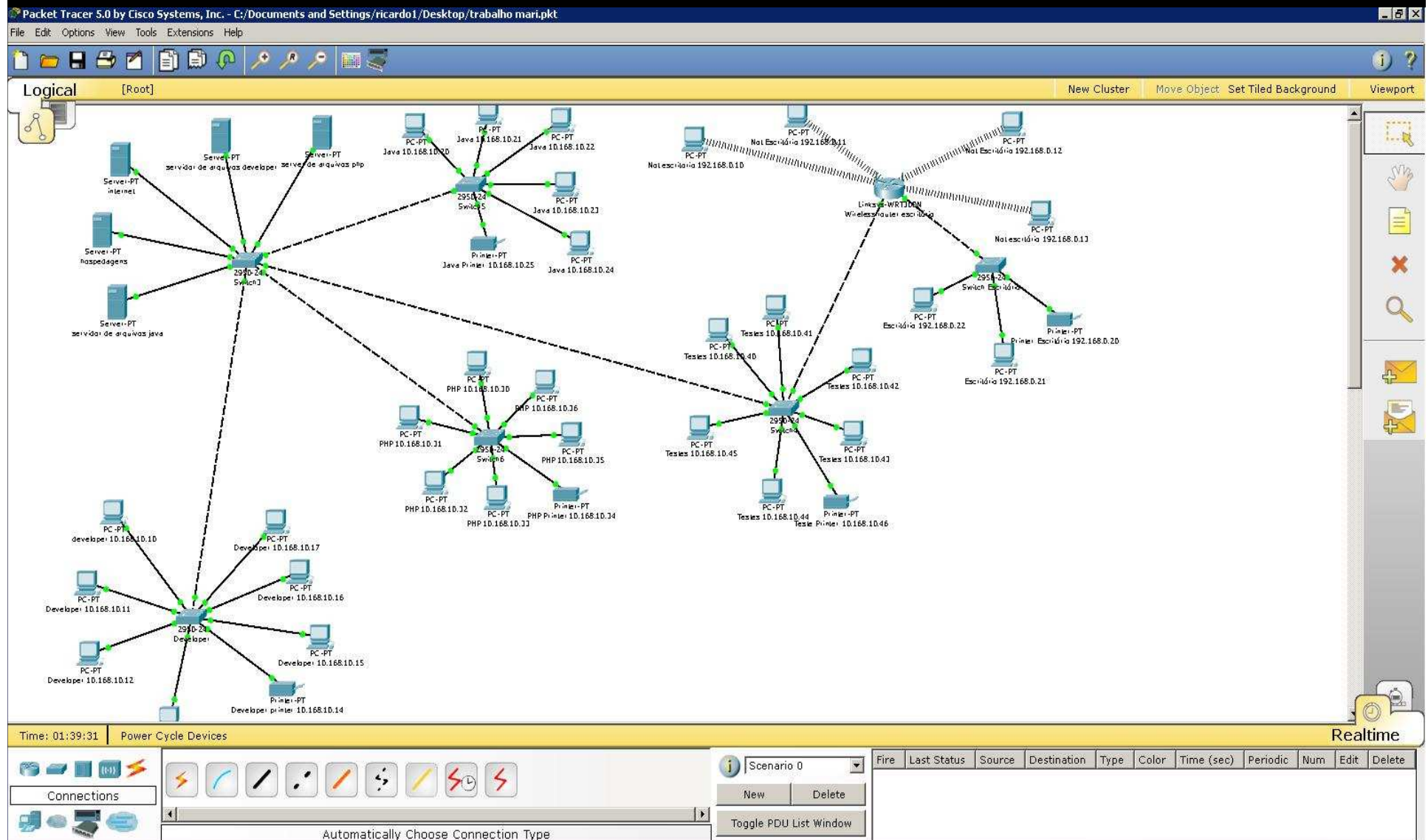
Desempenho

```
17:36:37.511545 IP 10.192.242.122.63284 > 200.152.65.10.22: P 157:209(52) ack 40552 win 64259
^C17:36:37.516593 IP 200.152.65.10.22 > 10.192.242.122.63284: P 42964:43208(244) ack 209 win 8576

333 packets captured
333 packets received by filter
0 packets dropped by kernel
[root@silverbolt root]# tcpdump -i eth2 host 10.192.242.122 -Nnl
tcpdump: verbose output suppressed, use -v or -vv for full protocol decode
listening on eth2, link-type EN10MB (Ethernet), capture size 96 bytes
17:36:54.322975 IP 74.125.107.93.80 > 10.192.242.122.63290: S 1420272515:1420272515(0) ack 1964573612 win 5840 <mss 1460,nop,nop,sackOK,nop,wscale 6>
17:36:54.323105 IP 200.152.65.10.22 > 10.192.242.122.63284: P 3152948901:3152949017(116) ack 363714774 win 8576
17:36:54.323107 IP 200.152.65.10.22 > 10.192.242.122.63284: P 116:232(116) ack 1 win 8576
17:36:54.336565 IP 10.192.242.122.63290 > 74.125.107.93.80: . ack 1 win 32768
17:36:54.338305 IP 10.192.242.122.63290 > 74.125.107.93.80: P 1:507(506) ack 1 win 32768
17:36:54.344122 IP 10.192.242.122.63284 > 200.152.65.10.22: . ack 232 win 64103
17:36:54.350351 IP 200.152.65.10.22 > 10.192.242.122.63284: P 232:900(668) ack 1 win 8576
17:36:54.350355 IP 200.152.65.10.22 > 10.192.242.122.63284: P 900:1032(132) ack 1 win 8576
17:36:54.356145 IP 200.152.65.10.22 > 10.192.242.122.63284: P 1032:1260(228) ack 1 win 8576
17:36:54.379054 IP 10.192.242.122.63284 > 200.152.65.10.22: . ack 1032 win 65535
17:36:54.381800 IP 200.152.65.10.22 > 10.192.242.122.63284: P 1260:1392(132) ack 1 win 8576
17:36:54.382928 IP 200.152.65.10.22 > 10.192.242.122.63284: P 1392:1524(132) ack 1 win 8576
17:36:54.384438 IP 10.192.242.122.63284 > 200.152.65.10.22: . ack 1392 win 65175
17:36:54.385411 IP 200.152.65.10.22 > 10.192.242.122.63284: P 1524:1656(132) ack 1 win 8576
17:36:54.387164 IP 10.192.242.122.63284 > 200.152.65.10.22: . ack 1656 win 64911
17:36:54.388092 IP 200.152.65.10.22 > 10.192.242.122.63284: P 1656:1788(132) ack 1 win 8576
17:36:54.388659 IP 200.152.65.10.22 > 10.192.242.122.63284: P 1788:1920(132) ack 1 win 8576
17:36:54.390572 IP 200.152.65.10.22 > 10.192.242.122.63284: P 1920:2052(132) ack 1 win 8576
17:36:54.391560 IP 10.192.242.122.63284 > 200.152.65.10.22: . ack 1920 win 64647
17:36:54.392395 IP 200.152.65.10.22 > 10.192.242.122.63284: P 2052:2280(228) ack 1 win 8576
17:36:54.399649 IP 10.192.242.122.63284 > 200.152.65.10.22: . ack 2280 win 64287
17:36:54.429747 IP 200.152.65.10.22 > 10.192.242.122.63284: P 2280:2508(228) ack 1 win 8576
17:36:54.429775 IP 200.152.65.10.22 > 10.192.242.122.63284: P 2508:2640(132) ack 1 win 8576
17:36:54.429777 IP 200.152.65.10.22 > 10.192.242.122.63284: P 2640:2772(132) ack 1 win 8576
17:36:54.429779 IP 200.152.65.10.22 > 10.192.242.122.63284: P 2772:2904(132) ack 1 win 8576
17:36:54.445940 IP 10.192.242.122.63284 > 200.152.65.10.22: . ack 2640 win 65535
17:36:54.448247 IP 10.192.242.122.63284 > 200.152.65.10.22: . ack 2904 win 65271
17:36:54.449285 IP 200.152.65.10.22 > 10.192.242.122.63284: P 2904:3228(324) ack 1 win 8576
17:36:54.456858 IP 200.152.65.10.22 > 10.192.242.122.63284: P 3228:3360(132) ack 1 win 8576
17:36:54.456861 IP 200.152.65.10.22 > 10.192.242.122.63284: P 3360:3492(132) ack 1 win 8576
17:36:54.471523 IP 200.152.65.10.22 > 10.192.242.122.63284: P 3492:3624(132) ack 1 win 8576
17:36:54.471621 IP 200.152.65.10.22 > 10.192.242.122.63284: P 3624:3756(132) ack 1 win 8576
17:36:54.471623 IP 200.152.65.10.22 > 10.192.242.122.63284: P 3756:3984(228) ack 1 win 8576
17:36:54.485204 IP 200.152.65.10.22 > 10.192.242.122.63284: P 3984:4308(324) ack 1 win 8576
17:36:54.493964 IP 10.192.242.122.63284 > 200.152.65.10.22: . ack 3360 win 64815
17:36:54.497219 IP 10.192.242.122.63284 > 200.152.65.10.22: . ack 3624 win 64551
17:36:54.500167 IP 10.192.242.122.63284 > 200.152.65.10.22: . ack 3984 win 64191
17:36:54.507524 IP 200.152.65.10.22 > 10.192.242.122.63284: P 4308:4440(132) ack 1 win 8576
17:36:54.507799 IP 200.152.65.10.22 > 10.192.242.122.63284: P 4440:4732(292) ack 1 win 8576
17:36:54.519137 IP 200.152.65.10.22 > 10.192.242.122.63284: P 4732:4960(228) ack 1 win 8576
17:36:54.528427 IP 200.152.65.10.22 > 10.192.242.122.63284: P 4960:5092(132) ack 1 win 8576
17:36:54.544085 IP 200.152.65.10.22 > 10.192.242.122.63284: P 5092:5224(132) ack 1 win 8576
17:36:54.545678 IP 10.192.242.122.63284 > 200.152.65.10.22: . ack 4440 win 65535
17:36:54.560585 IP 200.152.65.10.22 > 10.192.242.122.63284: P 5224:5452(228) ack 1 win 8576
```

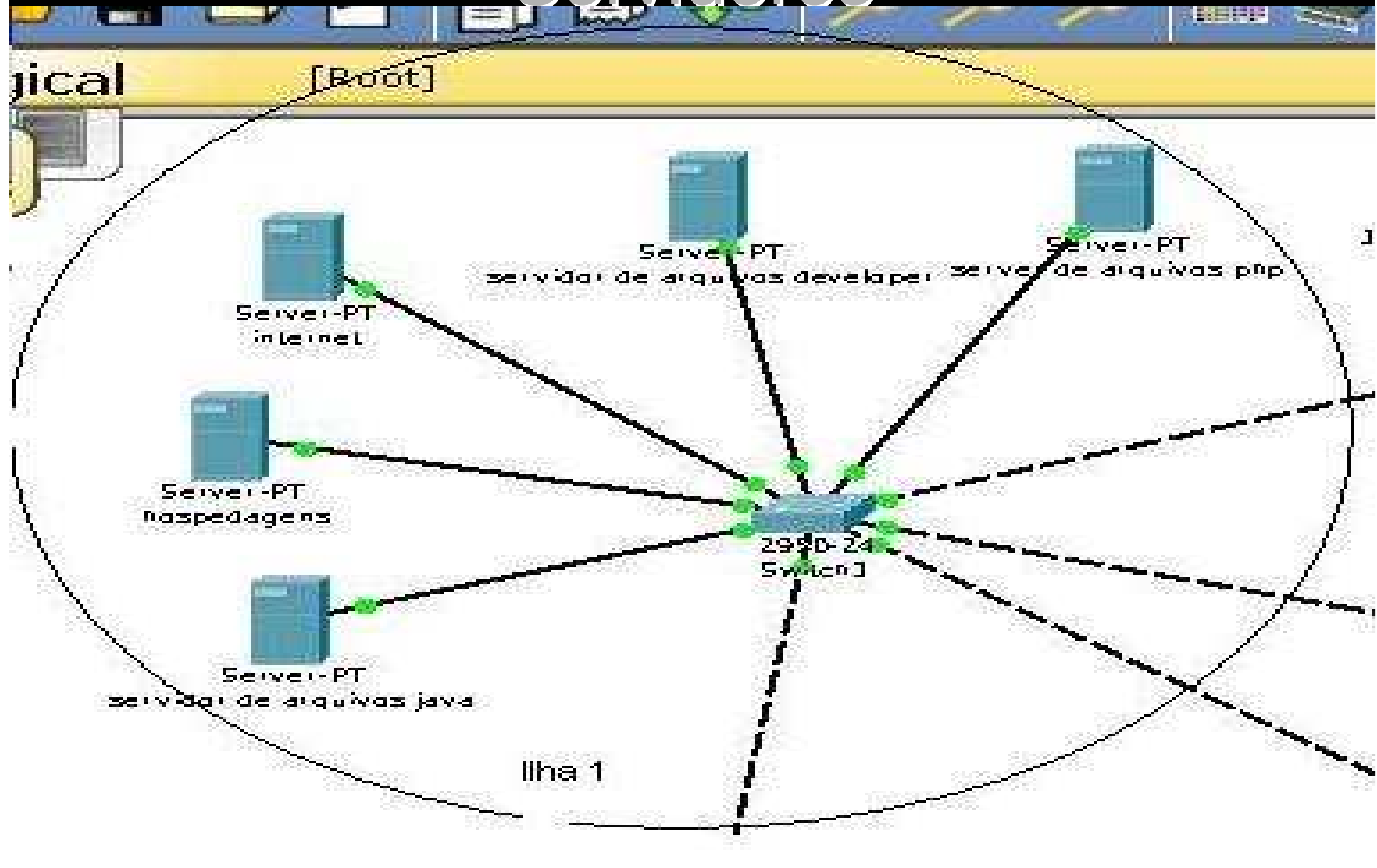
Fábrica de softwares

Conceito de ilhas

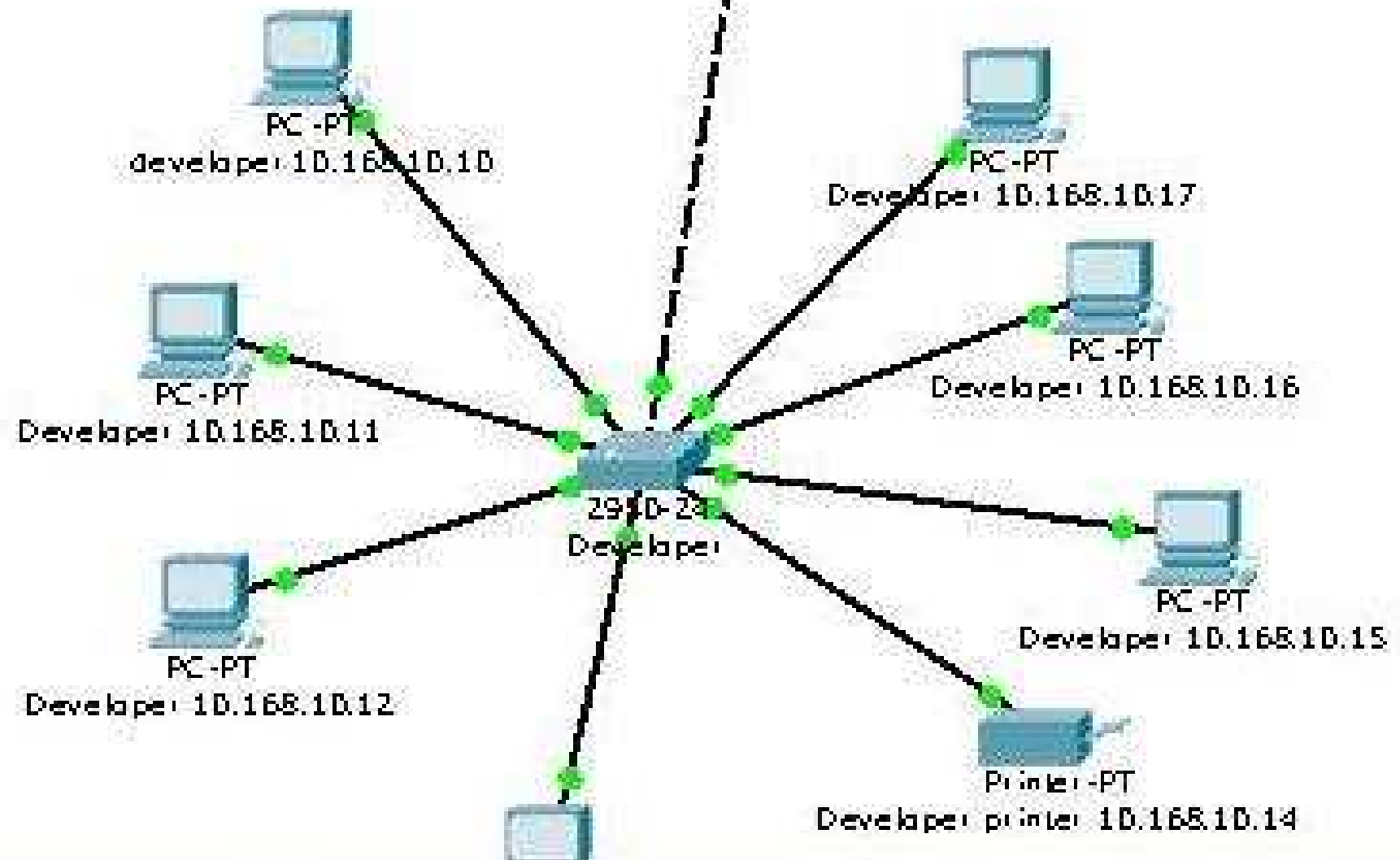


Ilha1

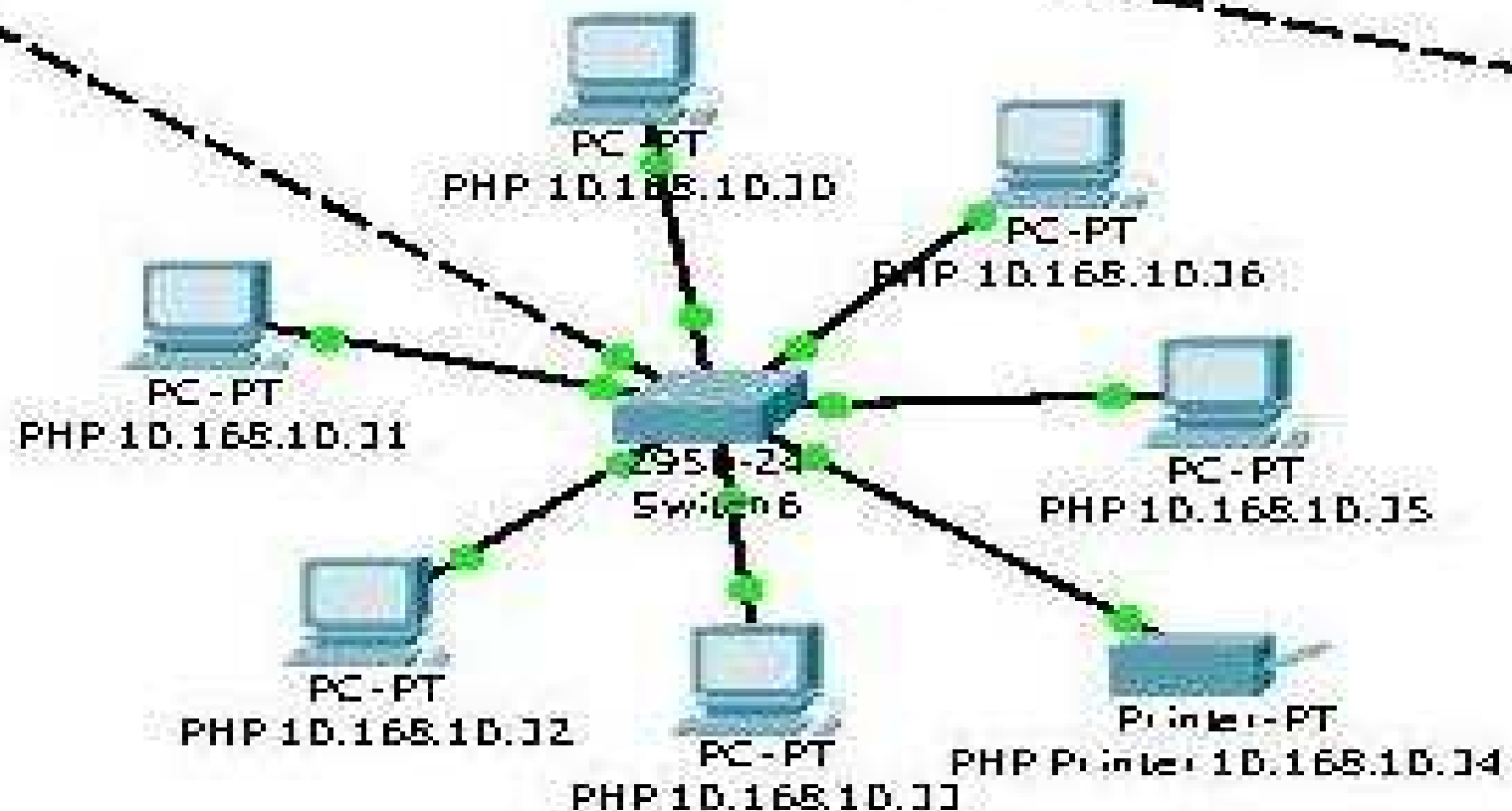
Servidores



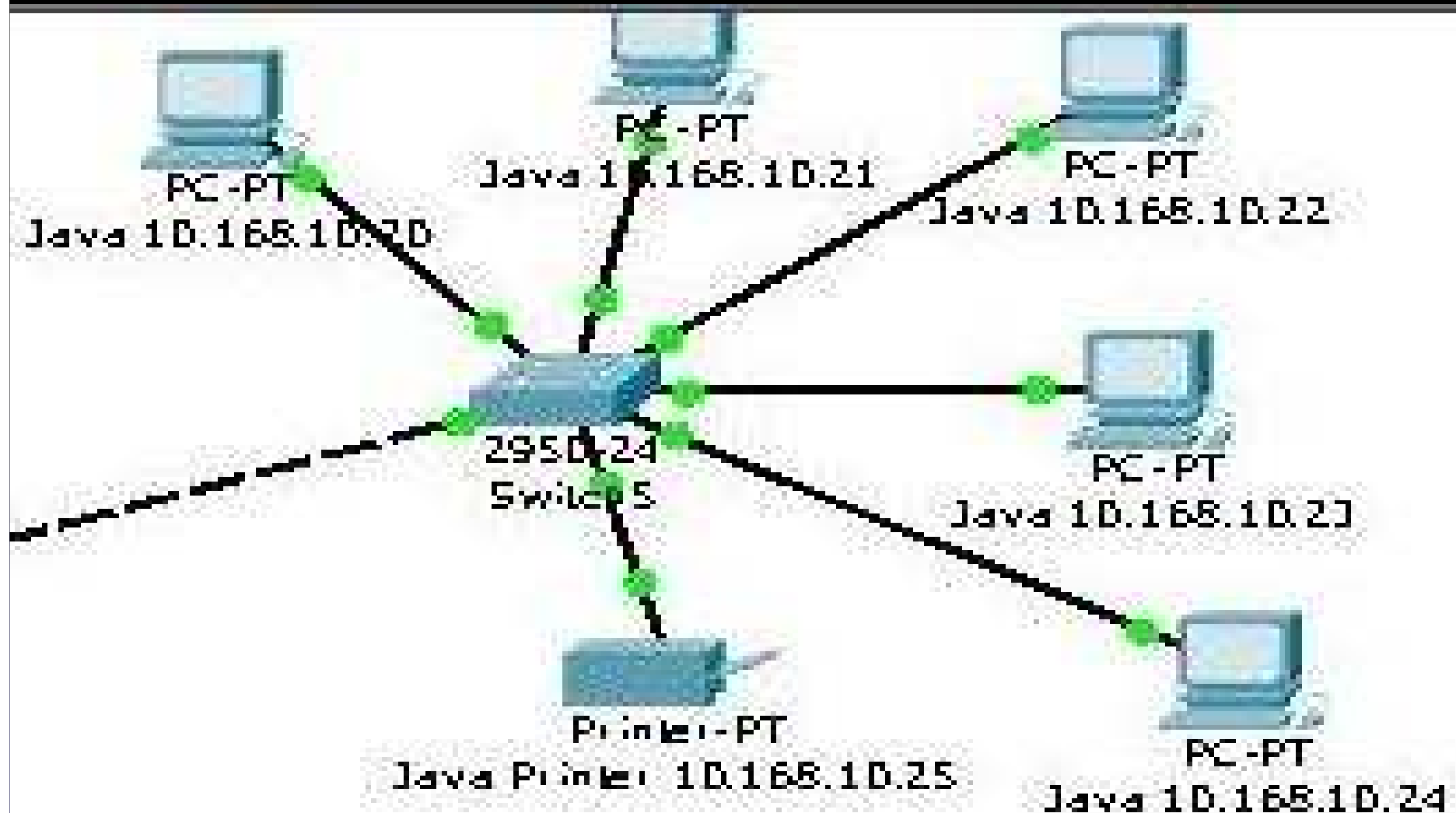
Ilha 2 Developer



Ilha3 PHP

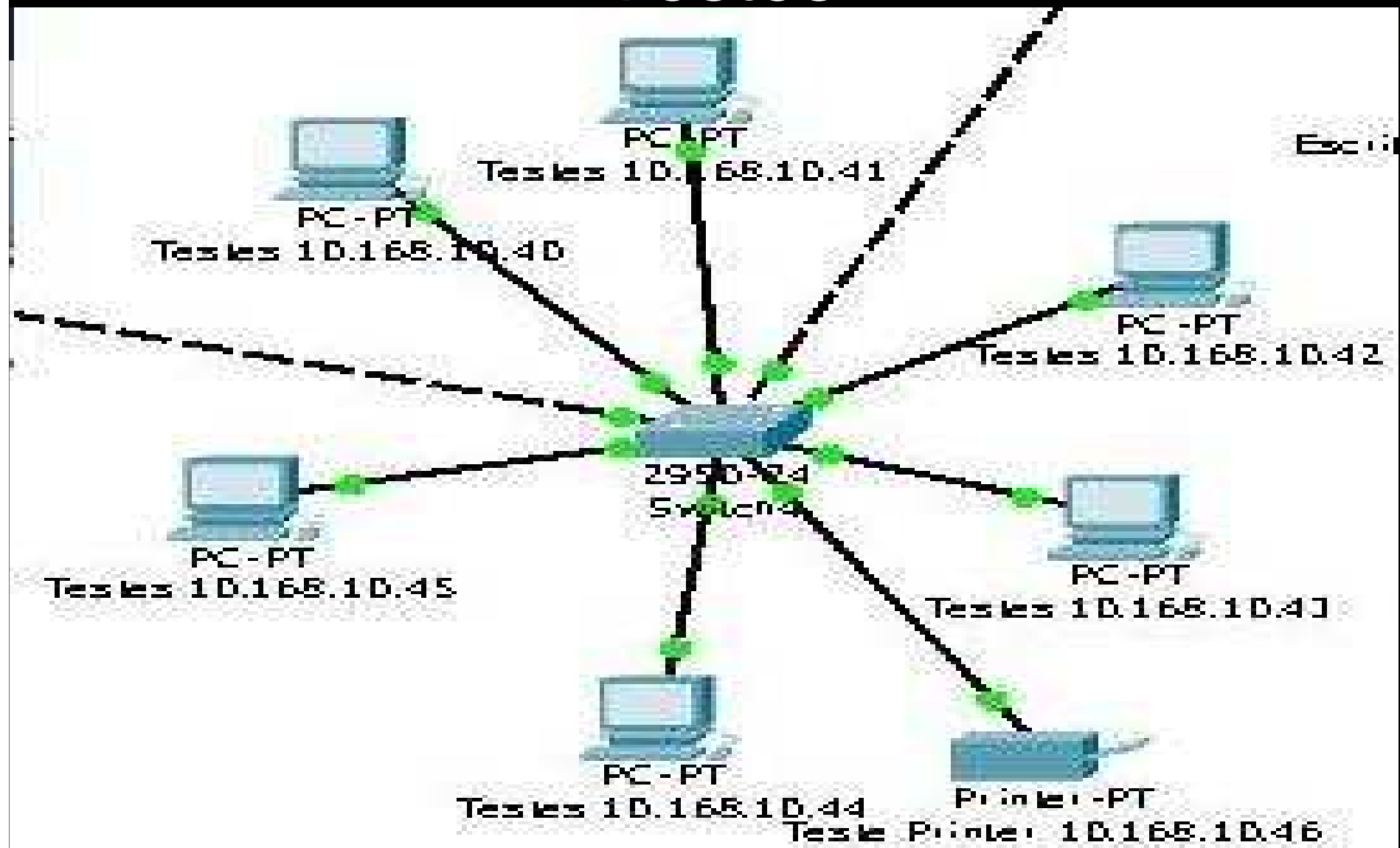


Ilha4 JAVA



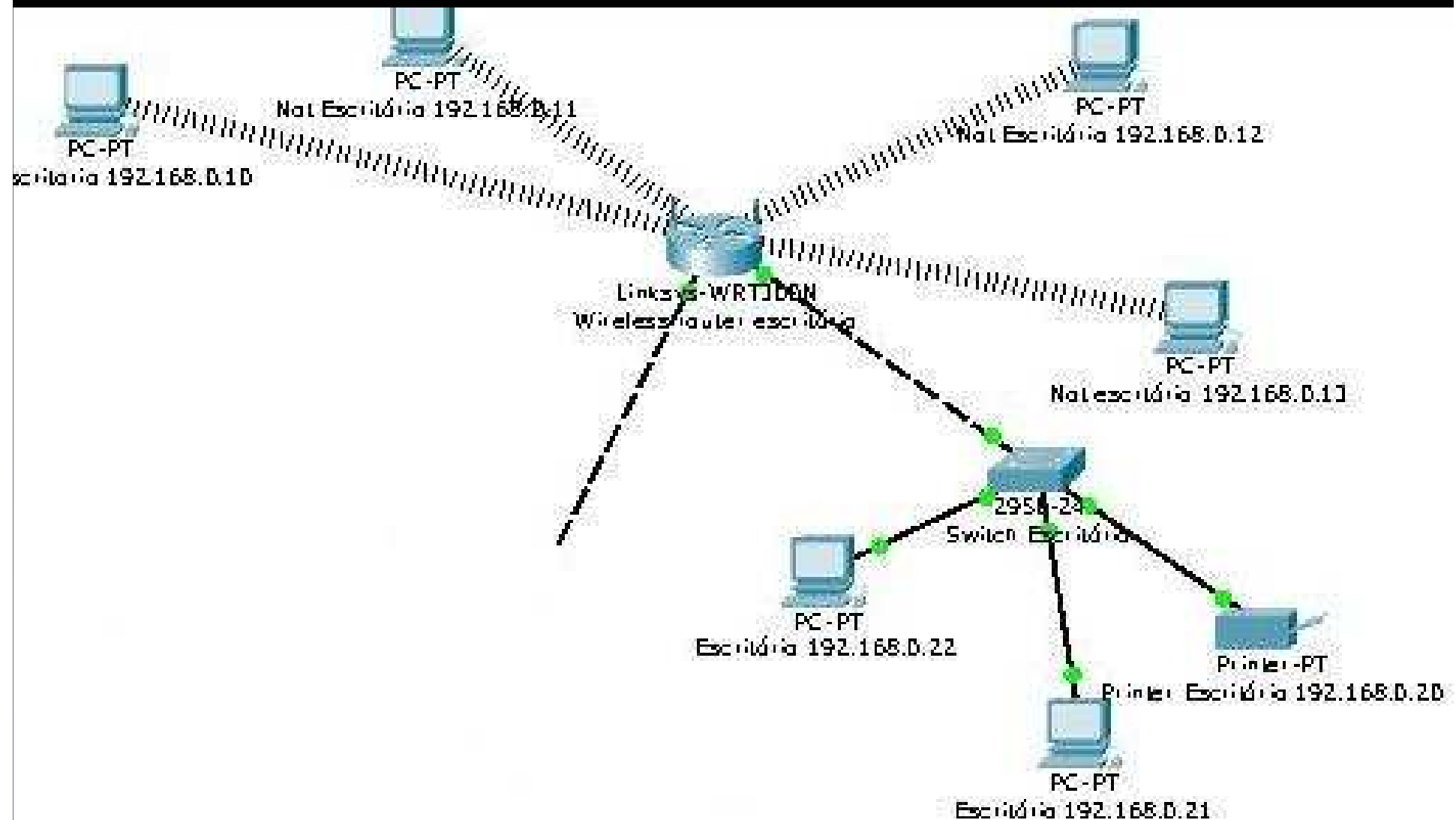
Ilha5

Testes



Ilha6

Escritórios



SNMP

Ricardo Dalio da Cunha

RA:2006200076

